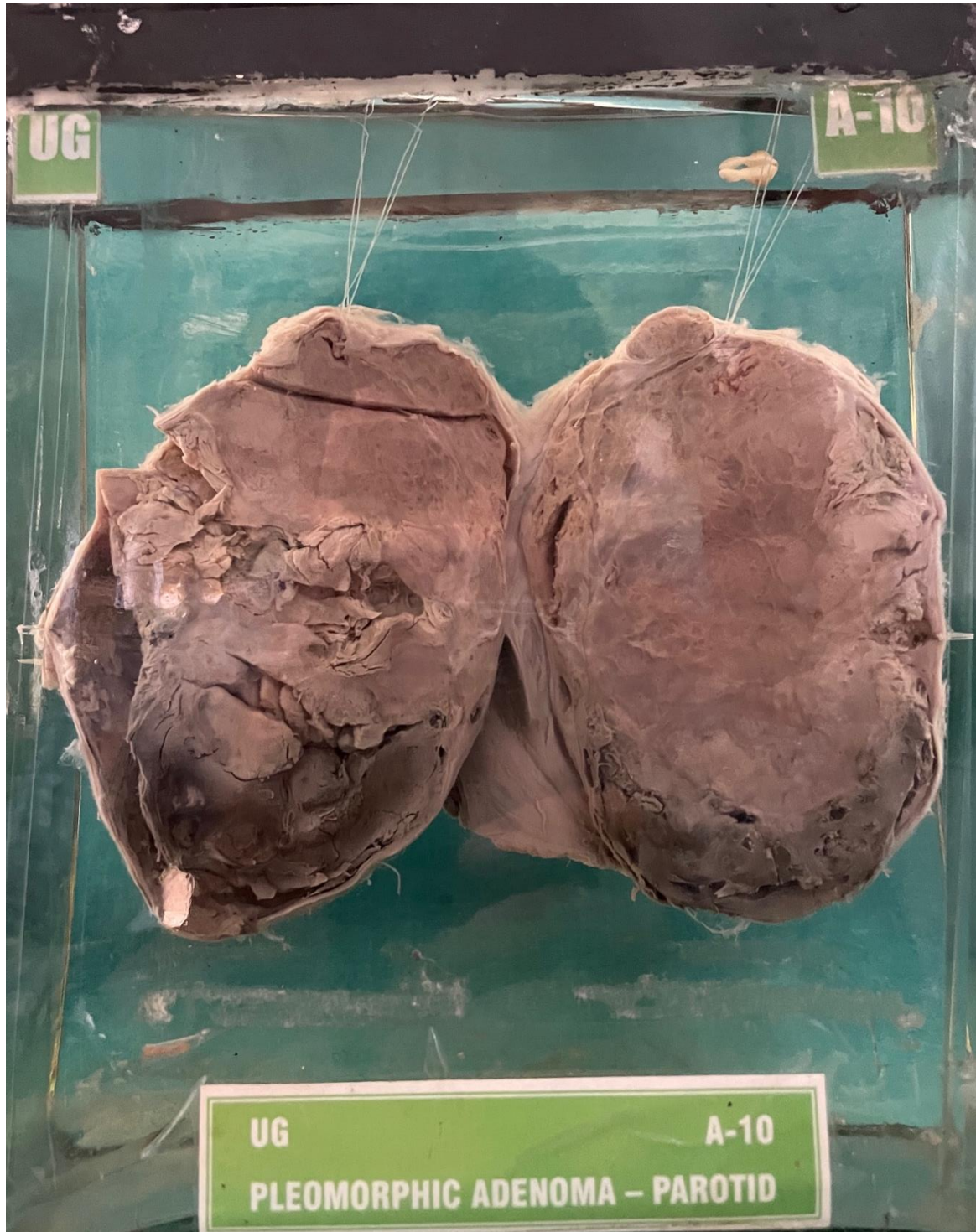


A10 – PLEOMORPHIC ADENOMA-PAROTID



PLEOMORPHIC ADENOMA PAROTID GLAND

A 40 year old woman was admitted with a big swelling on the right side cheek. Initially it was a small lump and gradually increasing in size since last 10 years. Pain and rapidly increasing in size since 1 year. The swelling was soft to firm at places cystic lobulated and mobile.

GROSS APPEARANCE: A soft cystic globular mass of tissue measuring 12 cms.x 8.0 cms. firm at places and greyish white in colour lobulated, smooth and well encapsulated. ~~firm~~ Small tag of skin attached. Cut open into two halves. Cut surface shows variegated appearance with firm and cystic areas and a big blood clot at one place. There are yellowish pale and bluish grey areas seen.

HISTOPATHOLOGY: Shows typical characteristics of pleomorphic adenoma.

