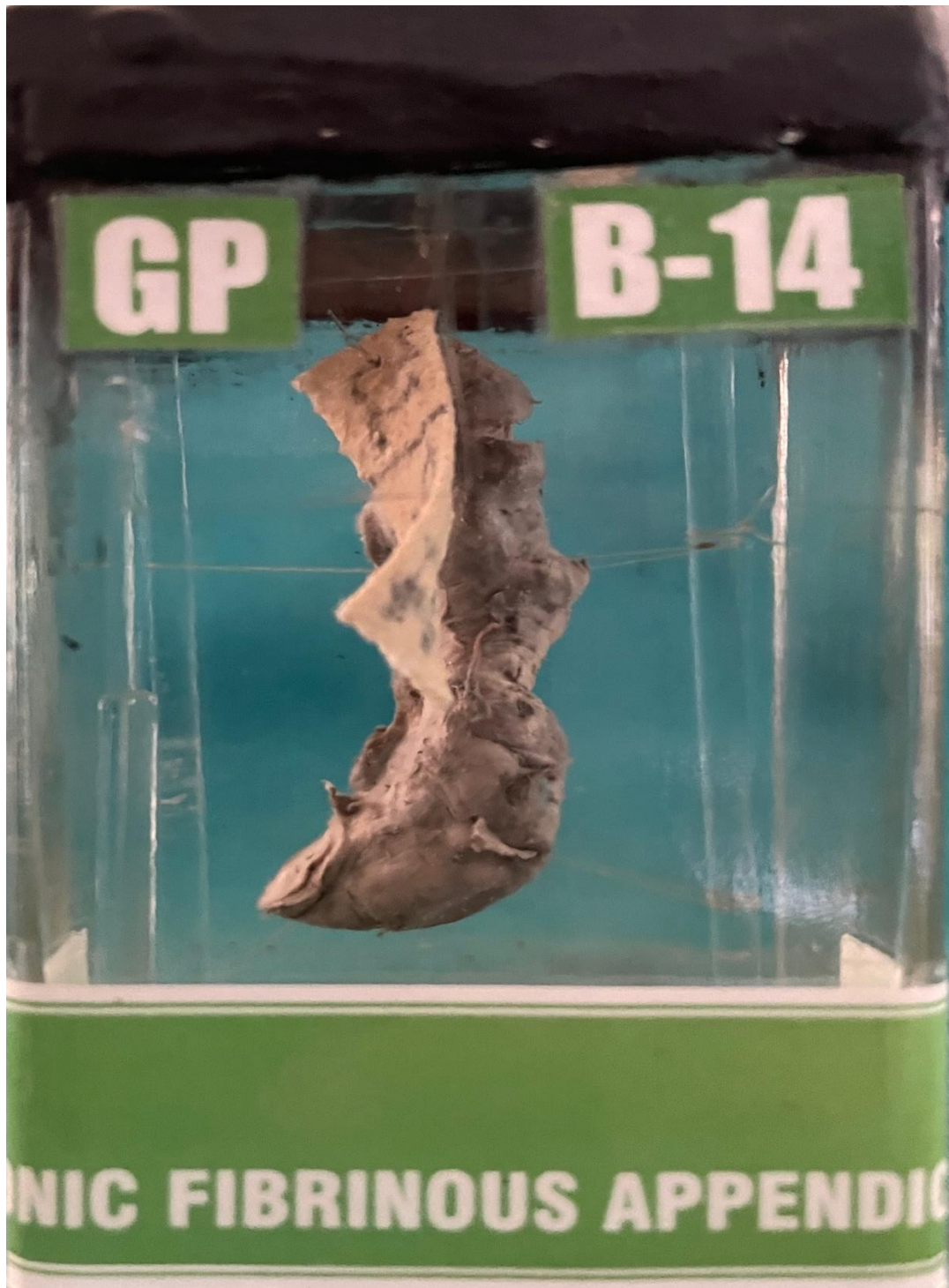


B14 – CHRONIC FIBRINOUS APPENDICITIS



CHRONIC FIBRINOUS APPENDICITIS

A male patient of 16 years old with the history of pain in the abdomen since 2-3 months.

GROSS APPEARANCE:- Specimen of appendix measuring about 7 x 1 1/2 cms. Outer surface blackish-gray in colour with white patches at places. Appendix as whole has increased in its girth with constricted scars at places. Cut surface of appendix shows narrowing of the lumen with thickened wall.

MICROSCOPY:- Section studied shows thinned out mucosa and submucosa, muscle layer and submucous layer are replaced by collagenised fibrous tissue. There is diffuse mixed inflammatory cell infiltration in all the coats of appendix. The vessels are severely congested.

IMPRESSION:- Chronic fibrinous appendicitis.