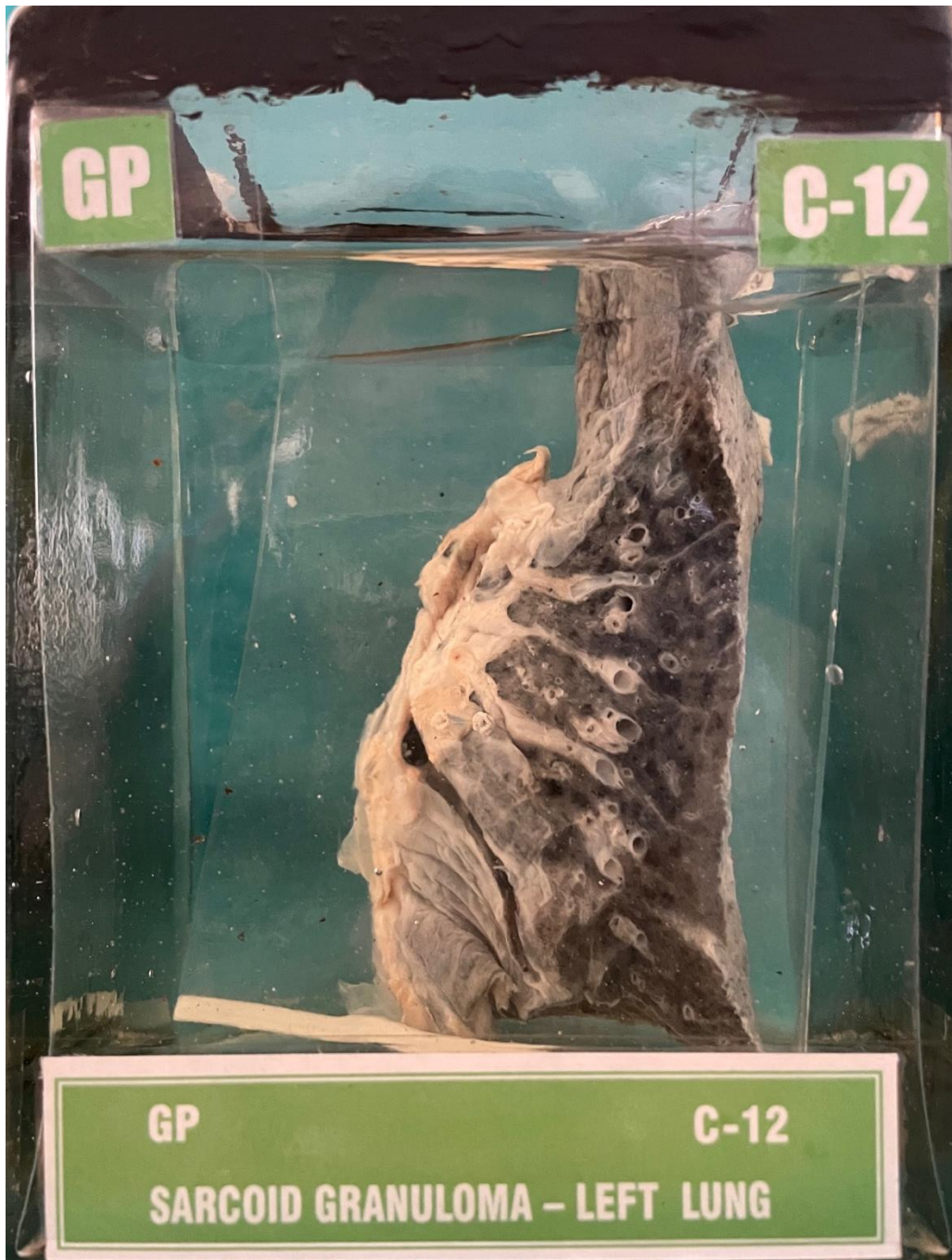


C12 – SARCOID GRANULOMAS-LEFT LUNG



GROSS:- Specimen of left lung showing collapse. The hilar lymph nodes are enlarged and their cut surface has pale pink colour. The lung shows a pale pink coloured, consolidated area, subpleurally at the periphery of Specimen.

MICROSCOPY:- Sections showed sarcoid granulomas and collapsed alveoli.