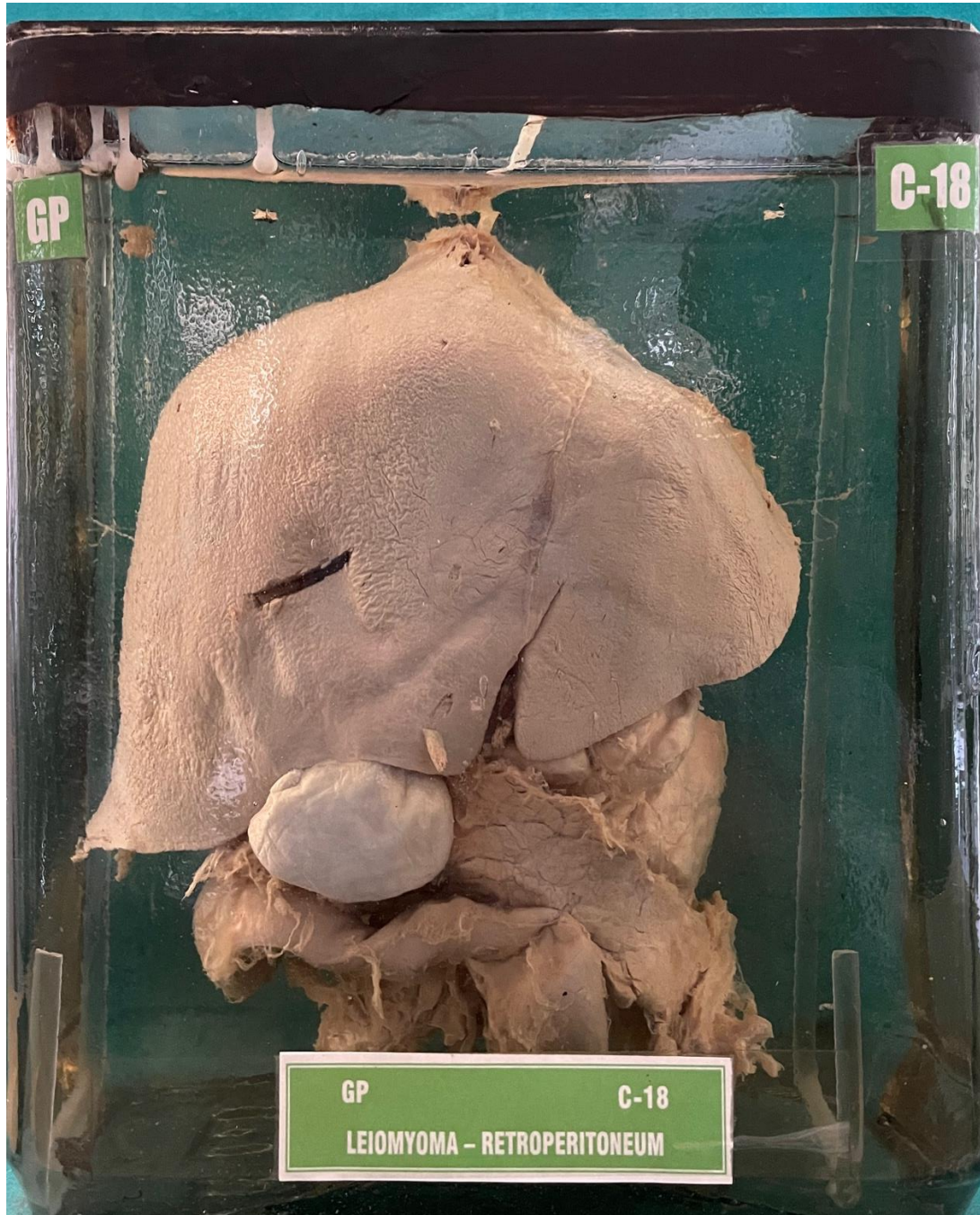


C18 – LEIOMYOMA-RETROPERITONEUM



HISTORY:- Specimen from cadaver from dept. of Anatomy. Accidentally detected mass in retroperitoneal area.

GROSS :- Specimen of liver, both kidneys, pancreas with great blood vessels. There are 3 nodules in the retroperitoneal region. These nodules are free from above viscera. The largest nodule measures 4.5x4 cms in size, firm to hard in consistency. C/s. of nodule showed whorled appearance. Pancreas is pushed anteriorly by tumour.

MICROSCOPY:- Sections from nodule showed a benign neoplasm. The neoplasm is comprised of spindle shaped cells with blunt, spindle shaped nuclei. The cells are arranged in fascicles, bundles and in whorles. No evidence of malignancy.

IMPRESSION:- Leiomyoma, Retroperitoneal region.