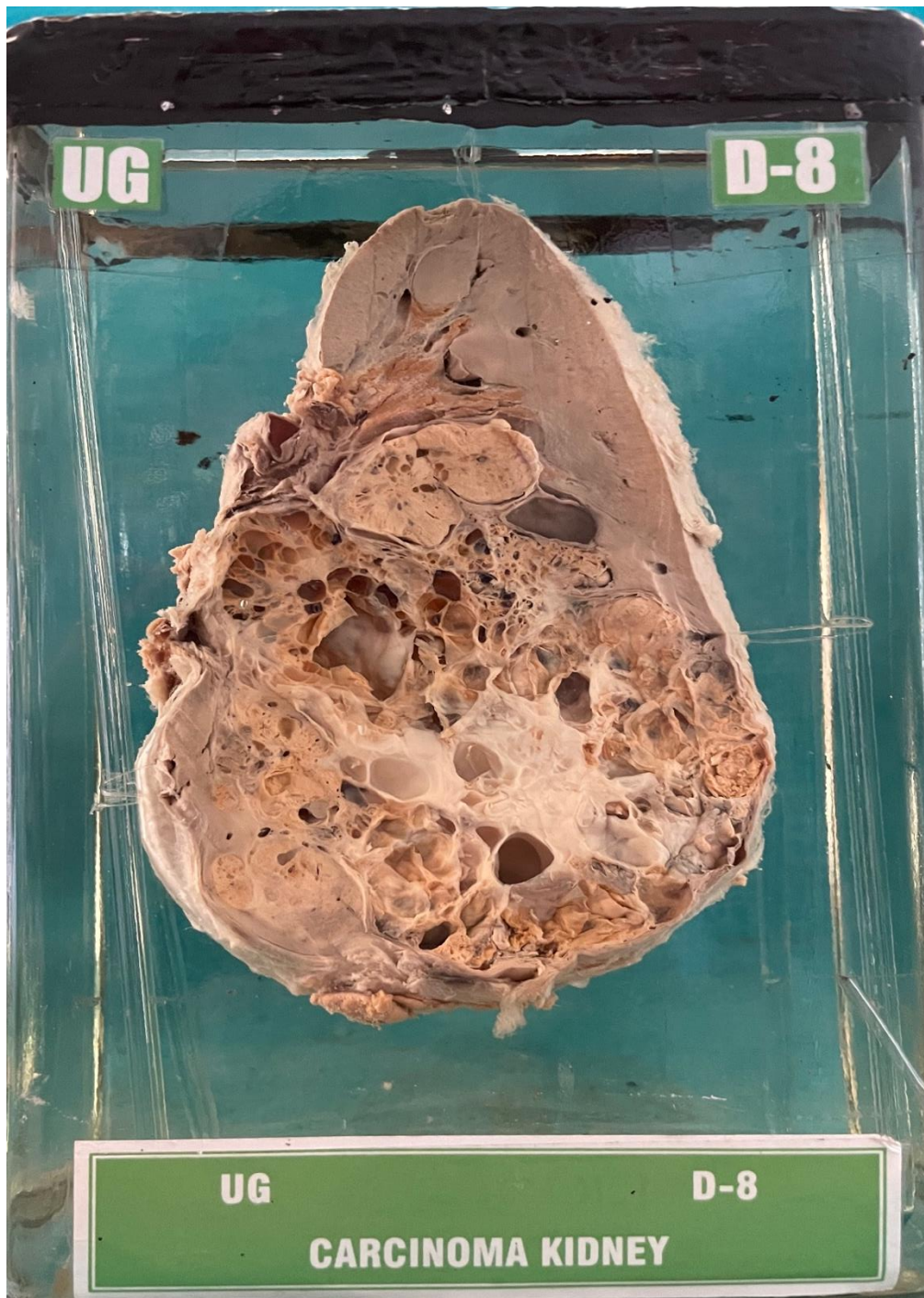


## D8 – CARCINOMA KIDNEY



- Specimen of kidney with a growth.
- The whole specimen measures 14x8x3 cms. and the growth measures 10x8x4 cms.
- C/s shows multiple cystic spaces. of varying sizes.
- Shows areas of haemorrhage and necrosis.
- Renal tissue is seen at one pole.

IAP:- Renal cell carcinoma.