



JAWAHARLAL NEHRU MEDICAL COLLEGE

KLE Academy of Higher Education & Research
(Deemed-to-be-University)

NEHRUNAGAR, BELAGAVI – 590010, KARNATAKA , INDIA

Accredited 'A' Grade by NAAC (2nd Cycle)

Place in Category 'A' by MHRD (GoI)



Office - (0831)-2471350

Website <http://www.jnmc.edu>

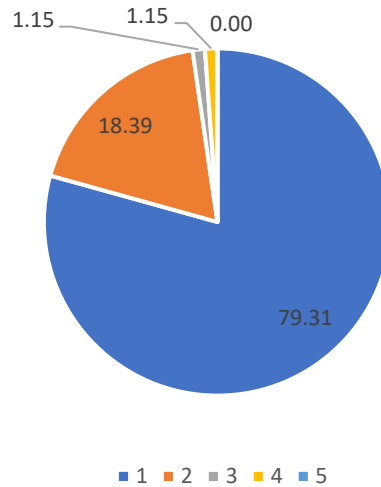
Principal - (0831)-2471701

E-mail : principal@jnmc.edu

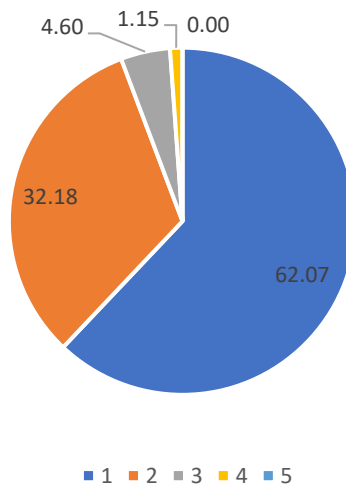
Fax : 91-0831-2470759

Faculty Feedback Analysis 2021

The content of the course includes all the topics as prescribed by the regulatory bodies/council



The course content help students to acquire relevant knowledge and skills



JAWAHARLAL NEHRU MEDICAL COLLEGE

*KLE Academy of Higher Education & Research
(Deemed-to-be-University)*

NEHRUNAGAR, BELAGAVI – 590010, KARNATAKA , INDIA

Accredited 'A' Grade by NAAC (2nd Cycle)

Place in Category 'A' by MHRD (GoI)

Office - (0831)-2471350

Website <http://www.jnmc.edu>

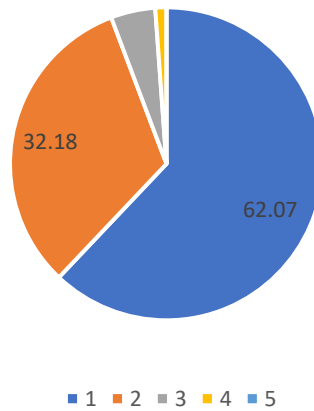
Principal - (0831)-2471701

E-mail : principal@jnmc.edu

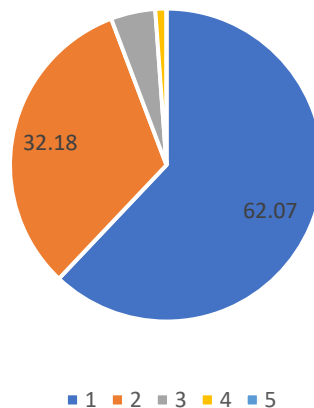
Fax : 91-0831-2470759



The course content was subdivided into must to know/core, nice to know , good to know categories/ non core



The curriculum provides scope to utilize appropriate teaching methods to emphasize the relevance of the subject.





JAWAHARLAL NEHRU MEDICAL COLLEGE

KLE Academy of Higher Education & Research
(Deemed-to-be-University)

NEHRUNAGAR, BELAGAVI – 590010, KARNATAKA , INDIA

Accredited 'A' Grade by NAAC (2nd Cycle)

Place in Category 'A' by MHRD (GoI)

Office - (0831)-2471350

Website <http://www.jnmc.edu>

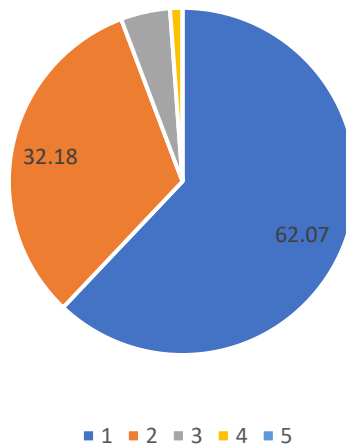
Principal - (0831)-2471701

E-mail : principal@jnmc.edu

Fax : 91-0831-2470759



Adequate faculty training is provided in terms of curriculum implementation?



The Feed Back was obtained from all the faculty of JNMC randomly the major observations are as follows

1. 79% of the faculty strongly agree that the content of the course includes all the topics as prescribed by the regulatory bodies/council.
2. 62% of the faculty feel the course content help students to acquire relevant knowledge and skills
3. 62% of the faculty agreed that the course content was subdivided into must to know/core , nice to know , good to know categories/ non core.
4. 62% of the faculty agreed that the curriculum provides scope to utilize appropriate teaching methods to emphasize the relevance of the subject.
5. Our Faculty adopt various teaching methods like Lectures, Case based learning, Problem based learning, Small group teaching, Bed side/chair side teaching, Hands on training, SDL, Seminar. Team Based Learning, Cadaveric Skill Lab. Cinme-eduction, Flip classes, DOPS etc.
6. 95% of the faculty feels that there is no requirement in terms of infrastructure or resource which isn't provided by the institute and most of them rate the infrastructure as Outstanding.



JAWAHARLAL NEHRU MEDICAL COLLEGE

*KLE Academy of Higher Education & Research
(Deemed-to-be-University)*

NEHRUNAGAR, BELAGAVI – 590010, KARNATAKA , INDIA

Accredited 'A' Grade by NAAC (2nd Cycle)

Place in Category 'A' by MHRD (GoI)



Office - (0831)-2471350

Website <http://www.jnmc.edu>

Principal - (0831)-2471701

E-mail : principal@jnmc.edu

Fax : 91-0831-2470759

-
7. Cinemeducation, Flipped class, case based teaching and Debate FLIP Classroom, 1 min preceptor Kahoot, online quiz, One minute preceptor Oscar evaluation for surgery , kitchen ophthalmology surgical techniques , debate , quiz for post graduates , video recording of their respective surgeries and discussion of the surgical steps scope for improvement and proper techniques with staff are few of innovative teaching methods you imbibed by the departments.
 8. Most of the faculty feels that institute has outstanding Library services, handy ICT support, Recording studio, Research Labs, Health Care Services and Laboratory services to the patients.
 9. 62% of teaching staff have adequate faculty training in terms of curriculum implementation.
 10. The faculty feels that each department has adequate infrastructure facility provided in labs / practical halls / clinical area are adequate for training UG students, Post graduates and Ph.D. scholars.

The same will be placed in the upcoming BOS meeting for the necessary Actions.



Dr N.S Mahantashetti,
Principal
J.N Medical College,
KAHER, Belagavi