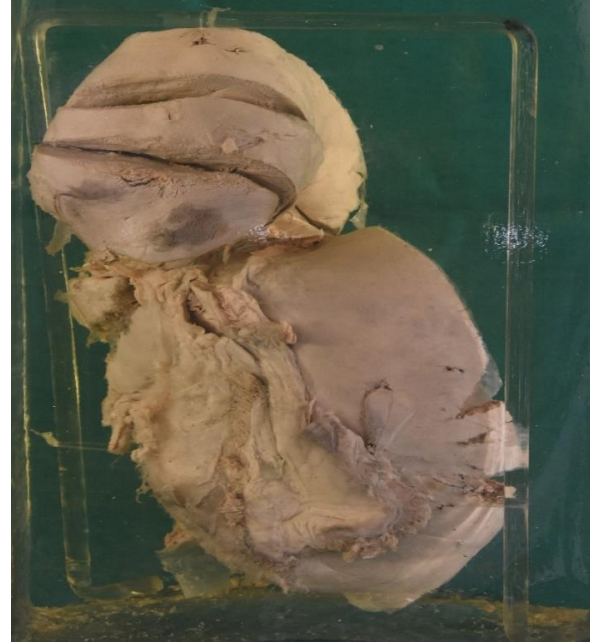


HEP B 2 DISSECTED LIVER

GROSS

AP view shows specimen of multiple slice dissected liver

Liver lies mainly in **right upper quadrant of abdomen** under cover of 7-11 ribs on right side occupying predominantly right Hypochondrium and Epigastrium



SALIENT FEATURES:

- It is **removed** and its weight, size, color, consistency and presence of any **pathology or injury** is noted.
- **Inflammatory or neoplastic processes** often cause **hepatomegaly**, but fibrotic conditions such as **cirrhosis** will cause a **shrunken** organ.
- For macroscopic examination of the liver, **multiple transverse sections** at 1–2 cm apart are given from one side to the other.
- The **gallbladder is dissected** out along with the liver.
- Normal liver weighs about: 1400 to 1500 g; 1.8% of body weight. Size: 30 x 18 x 9 cm.