

JAWAHARLAL NEHRU MEDICAL COLLEGE

KLE Academy of Higher Education & Research
(Deemed-to-be-University)

NEHRUNAGAR, BELAGAVI – 590010, KARNATAKA , INDIA

Accredited 'A' Grade by NAAC (2nd Cycle)

Place in Category 'A' by MHRD (GoI)

Office - (0831)-2471350

Website <http://www.jnmc.edu>

Principal - (0831)-2471701

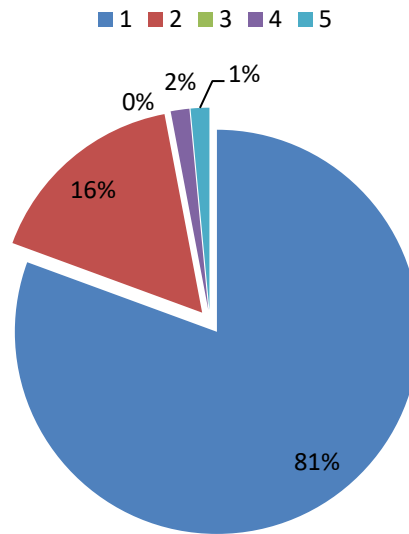
E-mail : principal@jnmc.edu

Fax : 91-0831-2470759



Student Feedback Analysis Report 2021

The goals of the course are clearly and explicitly stated and are readily accessible to you for reference





JAWAHARLAL NEHRU MEDICAL COLLEGE

KLE Academy of Higher Education & Research
(Deemed-to-be-University)

NEHRUNAGAR, BELAGAVI – 590010, KARNATAKA , INDIA

Accredited 'A' Grade by NAAC (2nd Cycle)

Place in Category 'A' by MHRD (GoI)



Office - (0831)-2471350

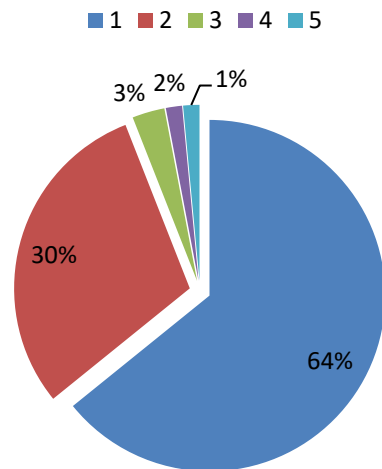
Website <http://www.jnmc.edu>

Principal - (0831)-2471701

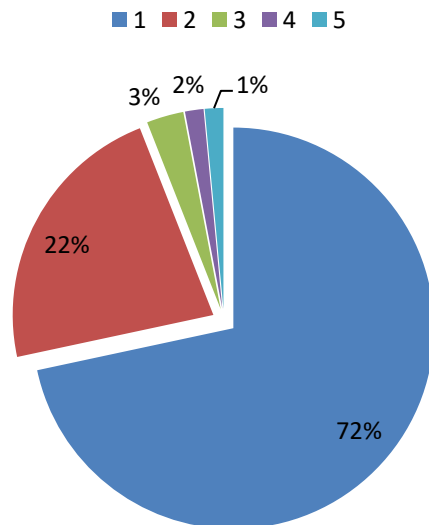
E-mail : principal@jnmc.edu

Fax : 91-0831-2470759

The course adopted teaching sessions that were interactive with students participation in learning



You were aware of learning resources and their availability in the institution



JAWAHARLAL NEHRU MEDICAL COLLEGE

KLE Academy of Higher Education & Research
(Deemed-to-be-University)

NEHRUNAGAR, BELAGAVI – 590010, KARNATAKA , INDIA

Accredited 'A' Grade by NAAC (2nd Cycle)

Place in Category 'A' by MHRD (GoI)

Office - (0831)-2471350

Website <http://www.jnmc.edu>

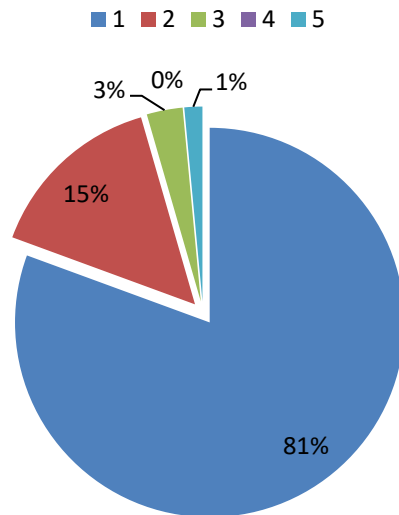
Principal - (0831)-2471701

E-mail : principal@jnmc.edu

Fax : 91-0831-2470759



The teachers allocated adequate time for acquisition of Knowledge (Lectures, small group discussions, tutorials, seminars., etc)





JAWAHARLAL NEHRU MEDICAL COLLEGE

*KLE Academy of Higher Education & Research
(Deemed-to-be-University)*

NEHRUNAGAR, BELAGAVI – 590010, KARNATAKA , INDIA

Accredited 'A' Grade by NAAC (2nd Cycle)

Place in Category 'A' by MHRD (GoI)



Office - (0831)-2471350

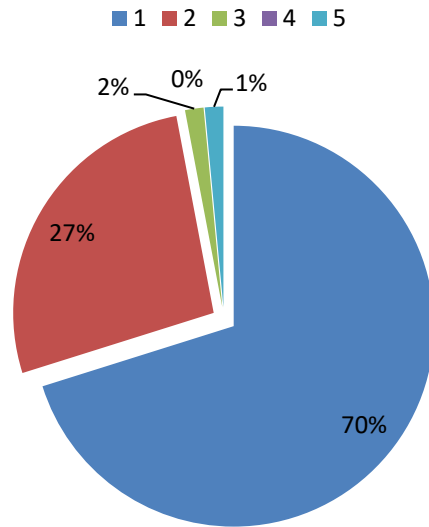
Website <http://www.jnmc.edu>

Principal - (0831)-2471701

E-mail : principal@jnmc.edu

Fax : 91-0831-2470759

The teachers allocated adequate time for acquisition of, Skills (laboratory sessions, bed side clinics, skill lab, community based skills)





JAWAHARLAL NEHRU MEDICAL COLLEGE

KLE Academy of Higher Education & Research
(Deemed-to-be-University)

NEHRUNAGAR, BELAGAVI – 590010, KARNATAKA , INDIA

Accredited 'A' Grade by NAAC (2nd Cycle)

Place in Category 'A' by MHRD (GoI)



Office - (0831)-2471350

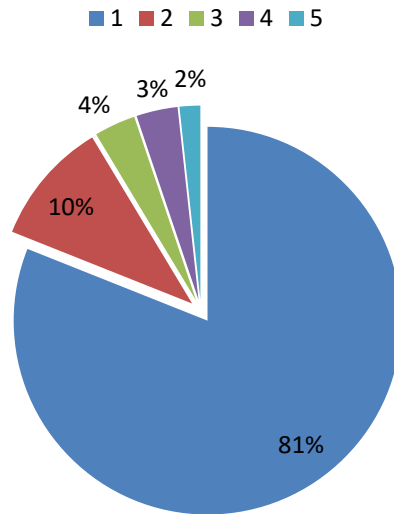
Website <http://www.jnmc.edu>

Principal - (0831)-2471701

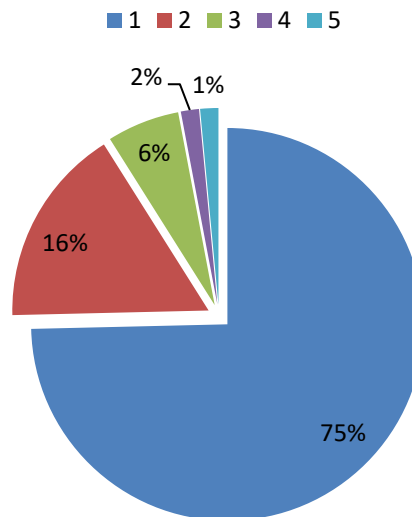
E-mail : principal@jnmc.edu

Fax : 91-0831-2470759

The teachers allocated adequate time for acquisition of,Attitude/
communication (AETCOM, bedside teaching, community visits,etc)



The teaching-learning methods used by the teachers provided better
understanding of the subjects





JAWAHARLAL NEHRU MEDICAL COLLEGE

*KLE Academy of Higher Education & Research
(Deemed-to-be-University)*

NEHRUNAGAR, BELAGAVI – 590010, KARNATAKA , INDIA

Accredited 'A' Grade by NAAC (2nd Cycle)

Place in Category 'A' by MHRD (GoI)



Office - (0831)-2471350

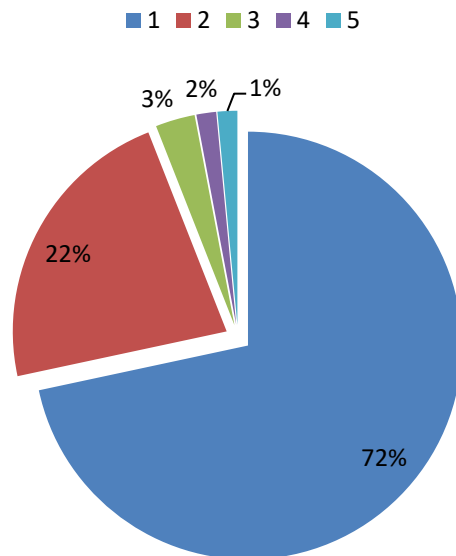
Website <http://www.jnmc.edu>

Principal - (0831)-2471701

E-mail : principal@jnmc.edu

Fax : 91-0831-2470759

The current curriculum promotes attainment of clinical/laboratory skills?





JAWAHARLAL NEHRU MEDICAL COLLEGE

*KLE Academy of Higher Education & Research
(Deemed-to-be-University)*

NEHRUNAGAR, BELAGAVI – 590010, KARNATAKA , INDIA

Accredited 'A' Grade by NAAC (2nd Cycle)

Place in Category 'A' by MHRD (GoI)



Office - (0831)-2471350

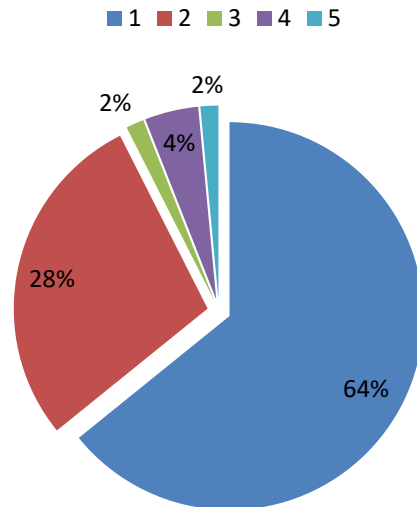
Website <http://www.jnmc.edu>

Principal - (0831)-2471701

E-mail : principal@jnmc.edu

Fax : 91-0831-2470759

The current curriculum provides opportunities to learn leadership/ teamwork qualities





JAWAHARLAL NEHRU MEDICAL COLLEGE

*KLE Academy of Higher Education & Research
(Deemed-to-be-University)*

NEHRUNAGAR, BELAGAVI – 590010, KARNATAKA , INDIA

Accredited 'A' Grade by NAAC (2nd Cycle)

Place in Category 'A' by MHRD (GoI)



Office - (0831)-2471350

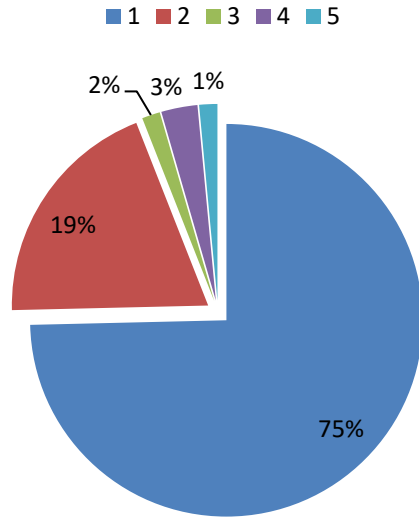
Website <http://www.jnmc.edu>

Principal - (0831)-2471701

E-mail : principal@jnmc.edu

Fax : 91-0831-2470759

The current curriculum provides opportunities to learn communication skills, ethics, attitudes towards patients/ relatives/peers and other stakeholders.



JAWAHARLAL NEHRU MEDICAL COLLEGE

KLE Academy of Higher Education & Research
(Deemed-to-be-University)

NEHRUNAGAR, BELAGAVI – 590010, KARNATAKA , INDIA

Accredited 'A' Grade by NAAC (2nd Cycle)

Place in Category 'A' by MHRD (GoI)

Office - (0831)-2471350

Website <http://www.jnmc.edu>

Principal - (0831)-2471701

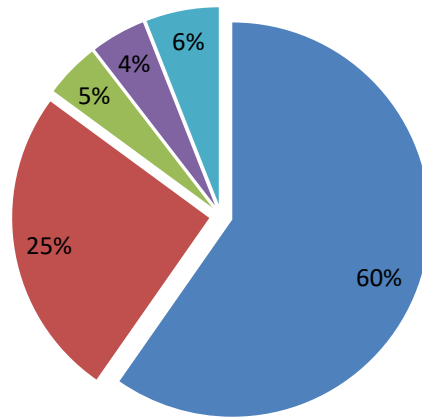
E-mail : principal@jnmc.edu

Fax : 91-0831-2470759



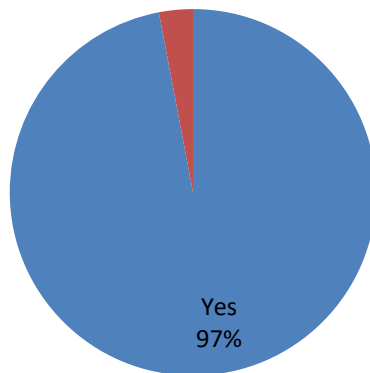
The institution provides opportunity for self-motivation, discussion, and reinforcement of lessons learnt.

■ 1 ■ 2 ■ 3 ■ 4 ■ 5



I am aware of the assessment methods and examination schedule at the beginning of the course

No
3%



Yes
97%



JAWAHARLAL NEHRU MEDICAL COLLEGE

KLE Academy of Higher Education & Research
(Deemed-to-be-University)

NEHRUNAGAR, BELAGAVI – 590010, KARNATAKA , INDIA

Accredited 'A' Grade by NAAC (2nd Cycle)

Place in Category 'A' by MHRD (GoI)



Office - (0831)-2471350

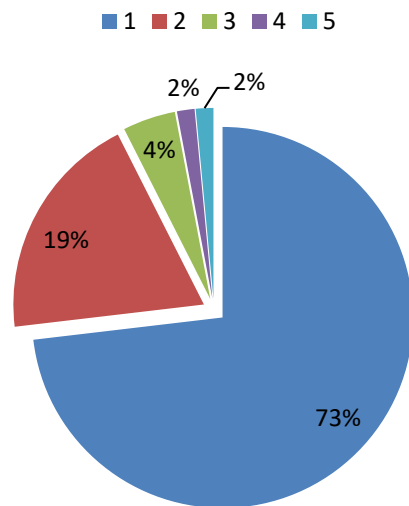
Website <http://www.jnmc.edu>

Principal - (0831)-2471701

E-mail : principal@jnmc.edu

Fax : 91-0831-2470759

I am able to apply/relate the knowledge/skills learnt earlier in the course/sessions, to the present learning sessions



JAWAHARLAL NEHRU MEDICAL COLLEGE

KLE Academy of Higher Education & Research
(Deemed-to-be-University)

NEHRUNAGAR, BELAGAVI – 590010, KARNATAKA , INDIA

Accredited 'A' Grade by NAAC (2nd Cycle)

Place in Category 'A' by MHRD (GoI)

Office - (0831)-2471350

Website <http://www.jnmc.edu>

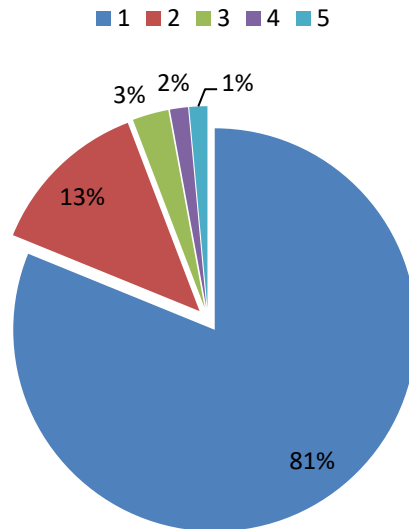
Principal - (0831)-2471701

E-mail : principal@jnmc.edu

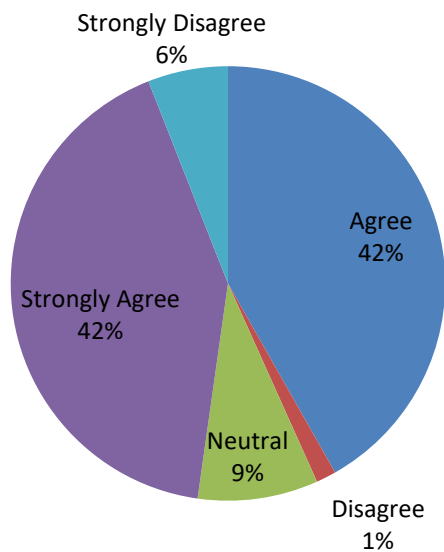
Fax : 91-0831-2470759



Internal Examinations are conducted regularly



Internal Examinations help in effective learning and acquisition of knowledge & skills





JAWAHARLAL NEHRU MEDICAL COLLEGE

*KLE Academy of Higher Education & Research
(Deemed-to-be-University)*

NEHRUNAGAR, BELAGAVI – 590010, KARNATAKA , INDIA

Accredited 'A' Grade by NAAC (2nd Cycle)

Place in Category 'A' by MHRD (GoI)



Office - (0831)-2471350

Website <http://www.jnmc.edu>

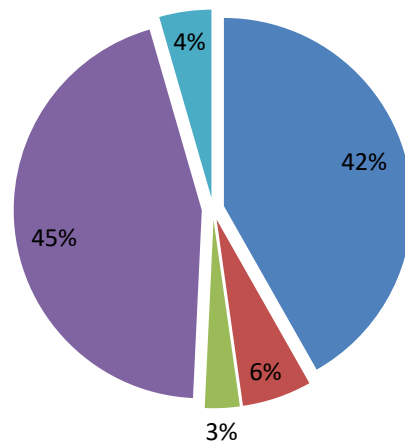
Principal - (0831)-2471701

E-mail : principal@jnmc.edu

Fax : 91-0831-2470759

Specific and Constructive Feedback on learning system is incorporated in the institution, during the course

■ 1 ■ 2 ■ 3 ■ 4 ■ 5





JAWAHARLAL NEHRU MEDICAL COLLEGE

KLE Academy of Higher Education & Research
(Deemed-to-be-University)

NEHRUNAGAR, BELAGAVI – 590010, KARNATAKA , INDIA

Accredited 'A' Grade by NAAC (2nd Cycle)

Place in Category 'A' by MHRD (GoI)



Office - (0831)-2471350

Website <http://www.jnmc.edu>

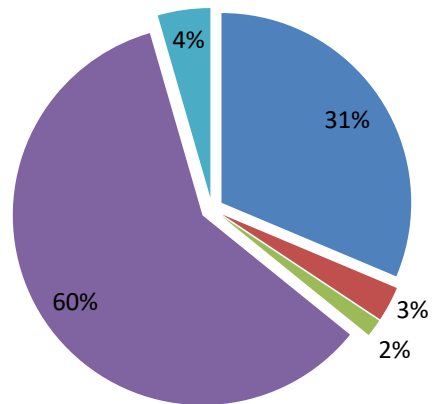
Principal - (0831)-2471701

E-mail : principal@jnmc.edu

Fax : 91-0831-2470759

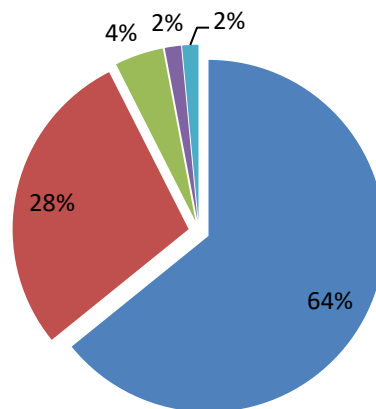
Formative(Internal) and Summative (university) Examinations are conducted as per the course curriculum

■ 1 ■ 2 ■ 3 ■ 4 ■ 5



Formative and Summative Examinations are fair, objective and relevant to the content learnt during the course

■ 1 ■ 2 ■ 3 ■ 4 ■ 5



JAWAHARLAL NEHRU MEDICAL COLLEGE

*KLE Academy of Higher Education & Research
(Deemed-to-be-University)*

NEHRUNAGAR, BELAGAVI – 590010, KARNATAKA , INDIA

Accredited 'A' Grade by NAAC (2nd Cycle)

Place in Category 'A' by MHRD (GoI)

Office - (0831)-2471350

Website <http://www.jnmc.edu>

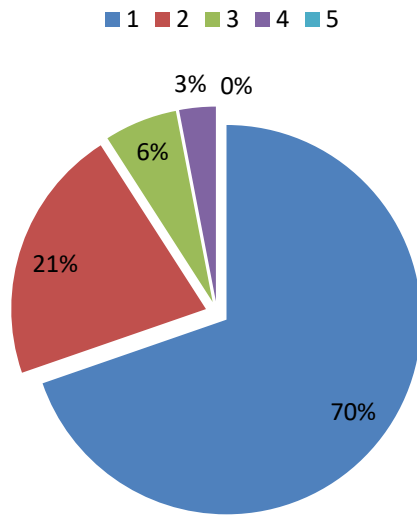
Principal - (0831)-2471701

E-mail : principal@jnmc.edu

Fax : 91-0831-2470759



Summative/University Examinations are able to assess overall knowledge and skills acquired by the students during the course





JAWAHARLAL NEHRU MEDICAL COLLEGE

*KLE Academy of Higher Education & Research
(Deemed-to-be-University)*

NEHRUNAGAR, BELAGAVI – 590010, KARNATAKA , INDIA

Accredited 'A' Grade by NAAC (2nd Cycle)

Place in Category 'A' by MHRD (GoI)



Office - (0831)-2471350

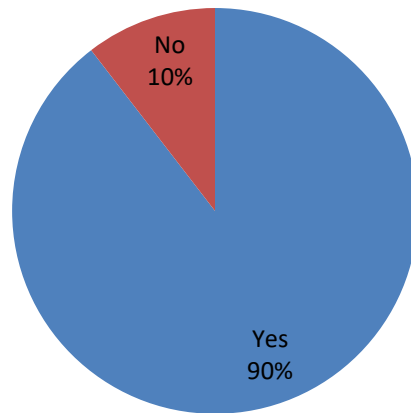
Website <http://www.jnmc.edu>

Principal - (0831)-2471701

E-mail : principal@jnmc.edu

Fax : 91-0831-2470759

Newer assessment tools (OSPE/OSCE, MiniCEX, DOAPS) are duly utilized to facilitate learning and judgment of learning



Analysis Report and Action Taken report for Student Feedback - 2021

The Student Feedback was obtained randomly from 4th Year MBBS Students. The major Observations are as following:

1. 81% of the students agreed that the goals of the course are clearly and explicitly stated and are readily accessible to you for reference



JAWAHARLAL NEHRU MEDICAL COLLEGE

KLE Academy of Higher Education & Research

(Deemed-to-be-University)

NEHRUNAGAR, BELAGAVI – 590010, KARNATAKA , INDIA

Accredited 'A' Grade by NAAC (2nd Cycle)

Place in Category 'A' by MHRD (GoI)

Office - (0831)-2471350

Website <http://www.jnmc.edu>

Principal - (0831)-2471701

E-mail : principal@jnmc.edu

Fax : 91-0831-2470759



-
2. 100% of the students agreed that the course timetable was known at the beginning of the course
 3. 64% of the students agreed that the course adopted teaching sessions that were interactive with students participation in learning
 4. 72% of the students were aware of learning resources and their availability in the institution
 5. 81% of the students agreed that the teachers allocated adequate time for acquisition of Knowledge (Lectures, small group discussions, tutorials, seminars., etc)
 6. 80% of the students agreed that the teachers allocated adequate time for acquisition of, Skills (laboratory sessions, bed side clinics, skill lab, community based skills)
 7. 81% of the students agreed that the teachers allocated adequate time for acquisition of, Attitude/ communication(AETCOM, bedside teaching, community visits,etc)
 8. 75% of the students agreed that the teaching-learning methods used by the teachers provided better understanding of the subjects
 9. 72% of the students agreed that the current curriculum promotes attainment of clinical/laboratory skills.
 10. 64% of the students agreed that the current curriculum provides opportunities to learn leadership/ teamwork qualities
 11. 75% of the students agreed that the current curriculum provides opportunities to learn communication skills, ethics, attitudes towards patients/ relatives/peers and other stakeholders.
 12. 60% of the students agreed that the institution provides opportunity for self-motivation, discussion, and reinforcement of lessons learnt
 13. 97% of the students agreed that they were aware of the assessment methods and examination schedule at the beginning of the course
 14. 73% of the students agreed that they are able to apply/relate the knowledge/skills learnt earlier in the course/sessions, to the present learning sessions
 15. 81% of the students agreed that the Internal Examinations are conducted regularly



JAWAHARLAL NEHRU MEDICAL COLLEGE

*KLE Academy of Higher Education & Research
(Deemed-to-be-University)*

NEHRUNAGAR, BELAGAVI – 590010, KARNATAKA , INDIA

Accredited 'A' Grade by NAAC (2nd Cycle)

Place in Category 'A' by MHRD (GoI)

Office - (0831)-2471350

Website <http://www.jnmc.edu>

Principal - (0831)-2471701

E-mail : principal@jnmc.edu

Fax : 91-0831-2470759



-
16. 84% of the students in total strongly agreed and agreed that Internal Examinations help in effective learning and acquisition of knowledge & skills
 17. 89% of the students in total strongly agreed and agreed Specific and Constructive Feedback on learning system is incorporated in the institution, during the course
 18. 60% of the students agreed that the Formative(Internal) and Summative (university) Examinations are conducted as per the course curriculum
 19. 64% of the students agreed that the Formative and Summative Examinations are fair, objective and relevant to the content learnt during the course
 20. 70% of the students agreed that the Summative/University Examinations are able to assess overall knowledge and skills acquired by the students during the course
 21. 90 % of the students agreed that the Newer assessment tools (OSPE/OSCE, MiniCEX, DOAPS) are duly utilized to facilitate learning and judgment of learning
 22. The best part of the course you appreciate /enjoyed till now. – Labour Posting, Clinical Teaching, Be site teaching, Skill Lab, Dissection, weekend classes,
 23. Awareness on Mental Health, and more participation in Intercollegiate competitions

The same will be placed in the upcoming BOS meeting for the necessary Actions.



Dr N.S Mahantashetti,
Principal
J.N Medical College,
KAHER, Belagavi